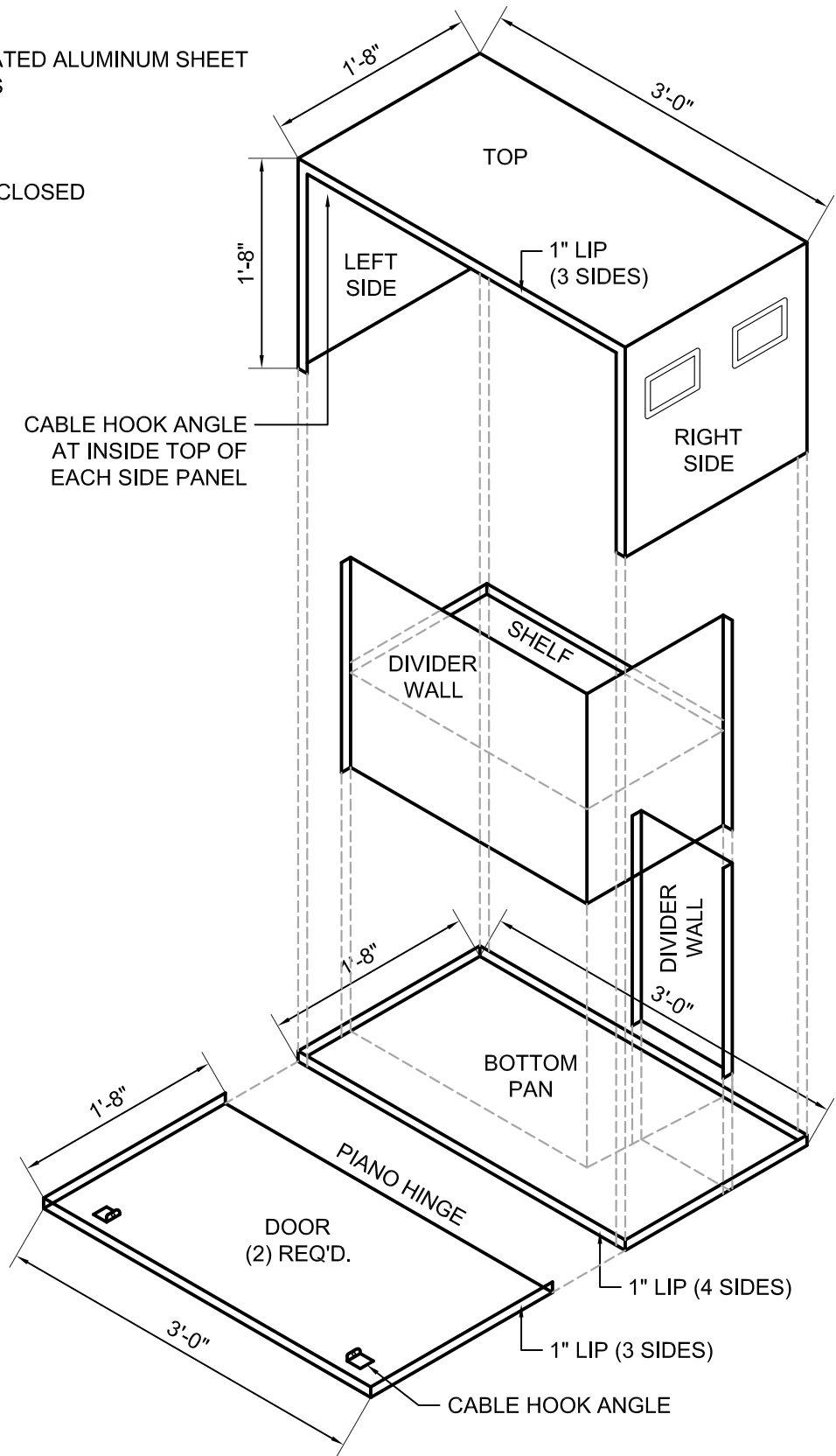
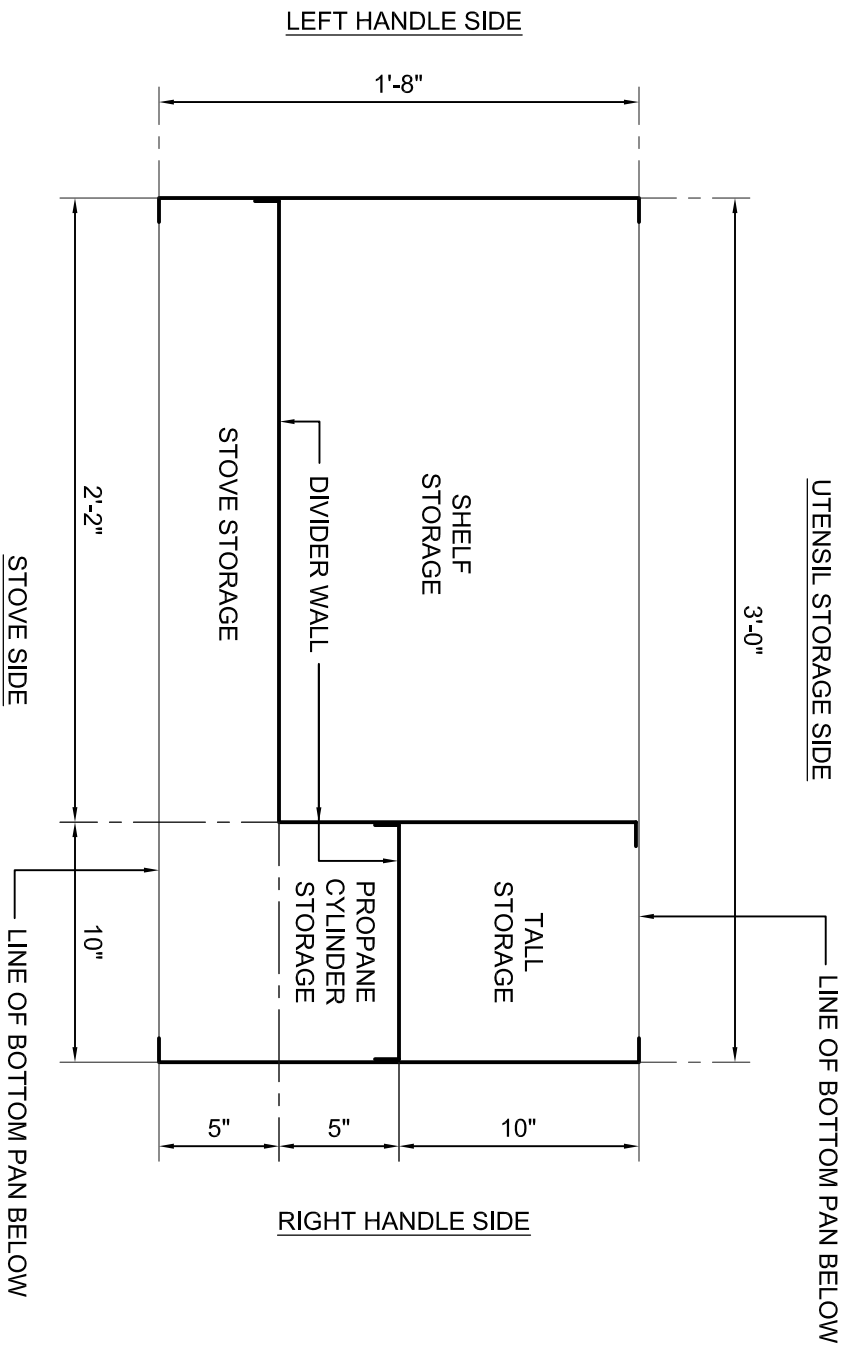


MATERIALS LIST

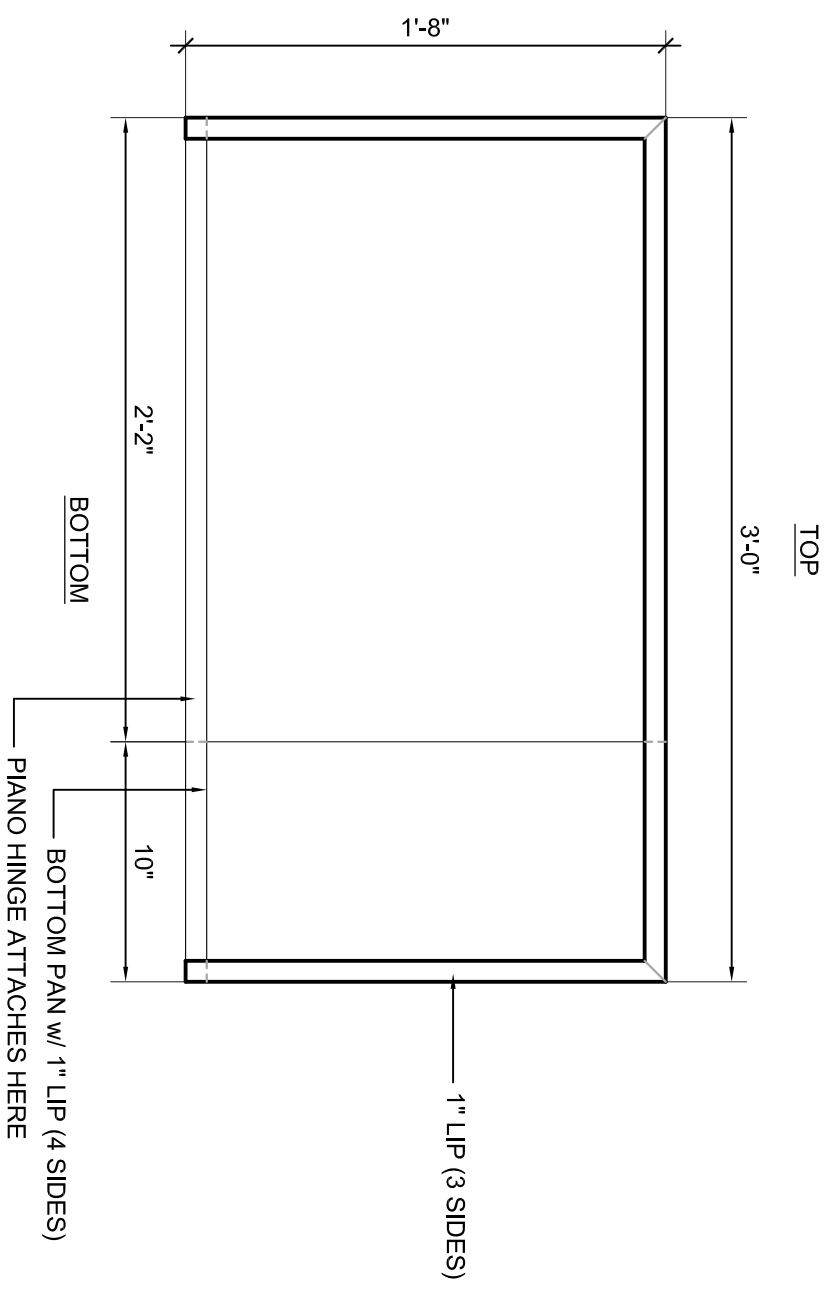
- 10 GA. (0.1019") POWDER-COATED ALUMINUM SHEET
- (4) SPRING-LOADED HANDLES
- (4) 30" LENGTHS OF CABLE
- (8) CABLE HOOK ANGLES
- (2) PIANO HINGES
- (4) CLASPS TO HOLD DOORS CLOSED



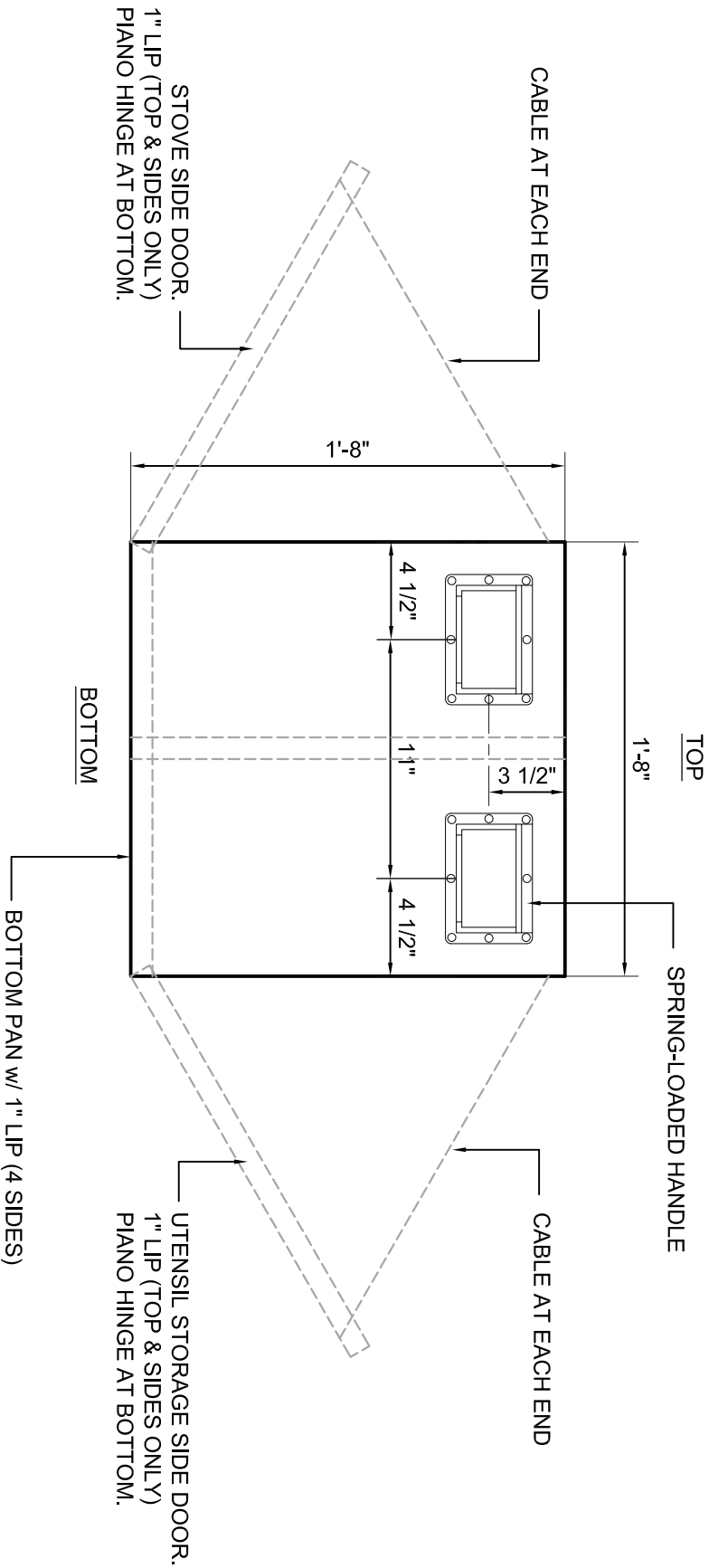
EXPLODED VIEW



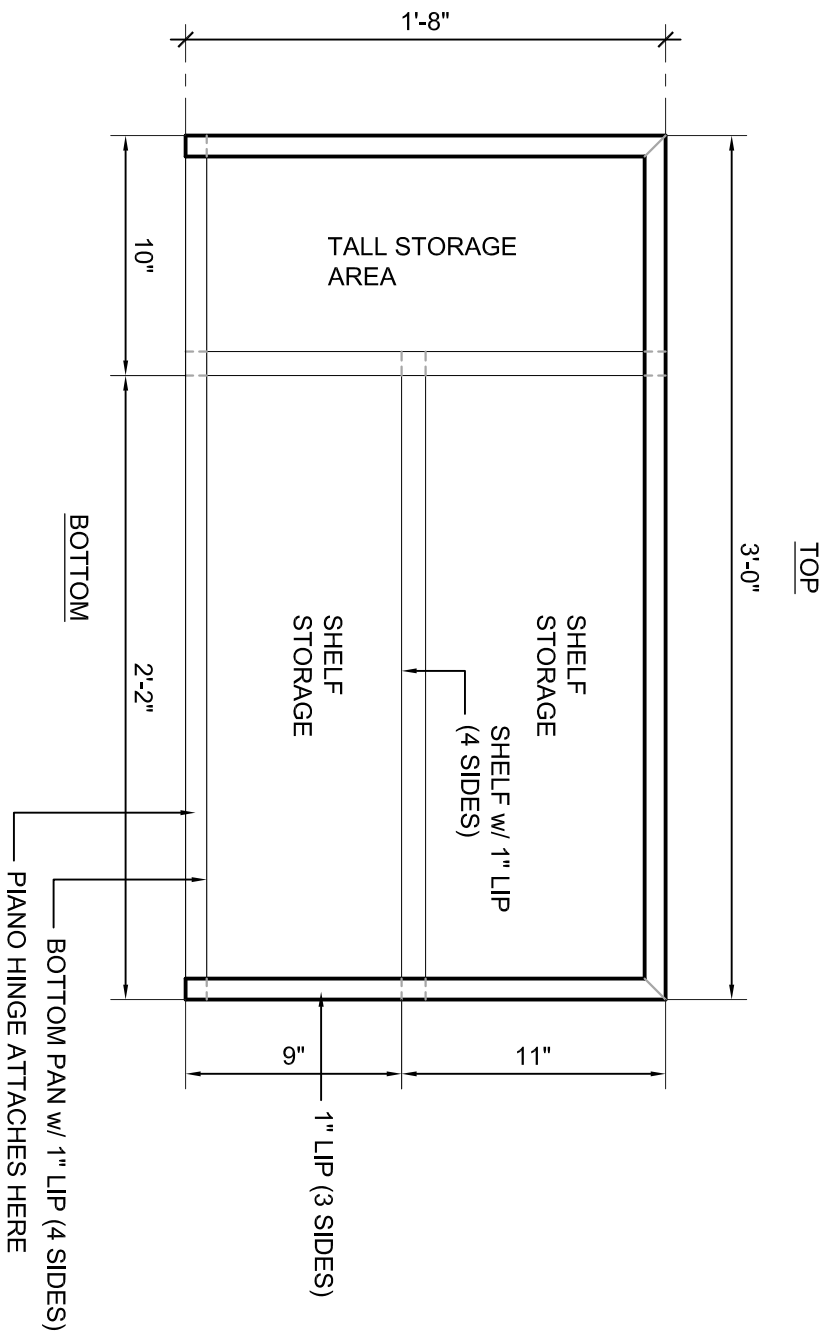
CUT AWAY PLAN VIEW OF BOX



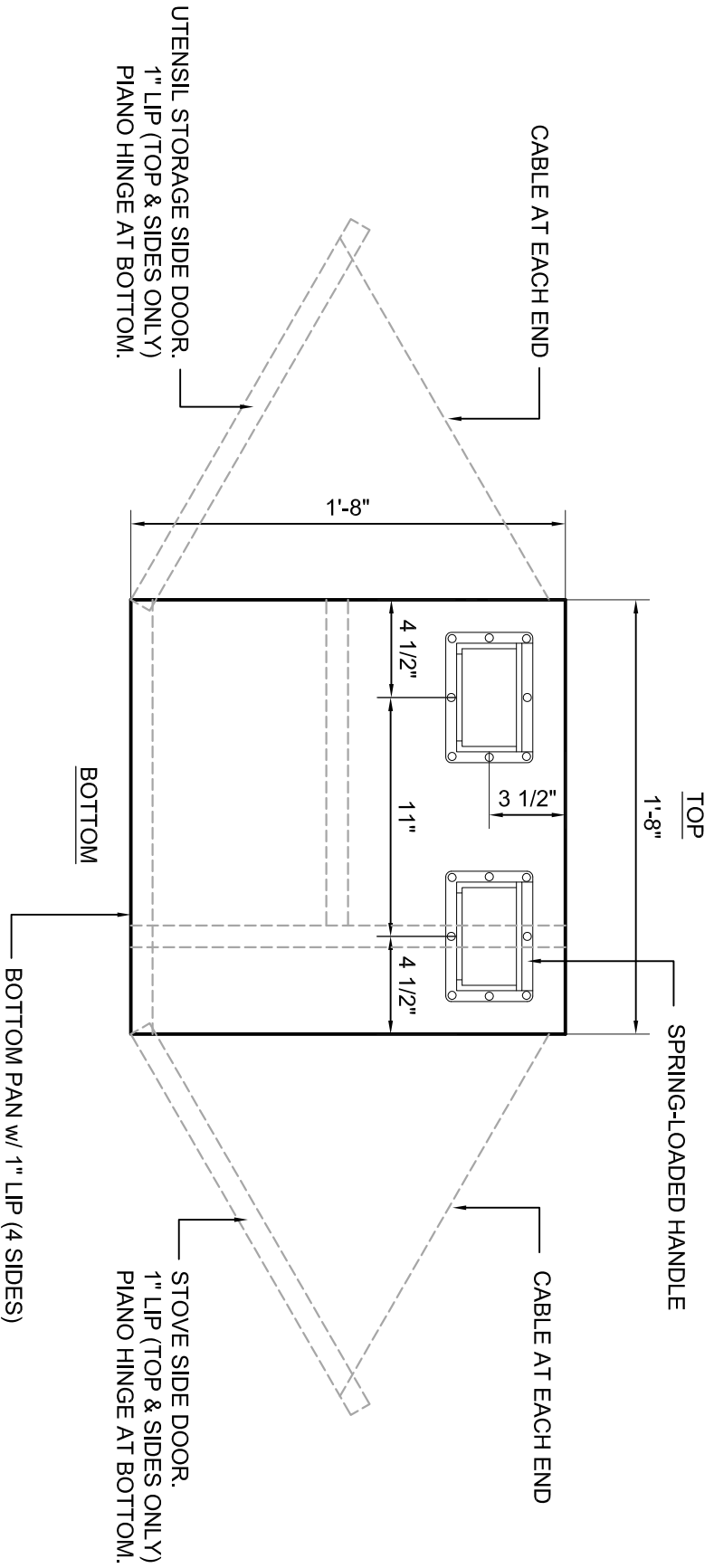
STOVE SIDE ELEVATION



RIGHT HANDLE SIDE ELEVATION



UTENSIL STORAGE SIDE ELEVATION



LEFT HANDLE SIDE ELEVATION